

10 Smart Travel Tips for Japan

Friendly manners to make your trip even better



Hands-Free Travel makes Japan trips easier



Use same-day luggage delivery and station lockers to travel hands-free.

Hands-Free Travel

Do: Use same-day luggage delivery services or station lockers to move easily.

Don't: Block pathways with large bags on trains or buses.

Why is Hands-Free-Travel Recommended?

Are you travelling to another city by train and don't want to bother with dragging your luggage onto trains, up the stairs, or across platforms? On trains, there is limited storage space, so what do you do?

Hands-Free Travel lets you explore Japan easily and comfortably, without carrying heavy luggage.

Enjoy Japan's high standards of safety and security, multilingual support for international visitors, on-time delivery (same-day or scheduled), and compensation for loss or damage, thanks to Japan's well-established logistics infrastructure.

Where Can I Use It?

Major airports in Japan — Narita, Haneda, and Kansai International Airport — offer luggage delivery services that send your bags directly to your hotel.

Hands-Free Travel is not limited to airports: many hotels can arrange luggage delivery between hotels. Ask the front desk for details.

Even if you are not staying at a large hotel, you can drop off your luggage at convenience stores for delivery.

In addition, many train stations offer coin lockers, where you can store your luggage safely.



Coin lockers



Scan the QR code for more information



Explore rural & lesser-known destinations



Step beyond big cities to discover an authentic, quieter Japan.

Explore Beyond Big Cities

Do: Visit rural or lesser-known destinations respectfully.

Don't: Disturb local communities or enter private property.



Use regional travel passes



Travel farther for less with regional passes.

Use Regional Travel Passes

Do: Save money with regional transportation passes.

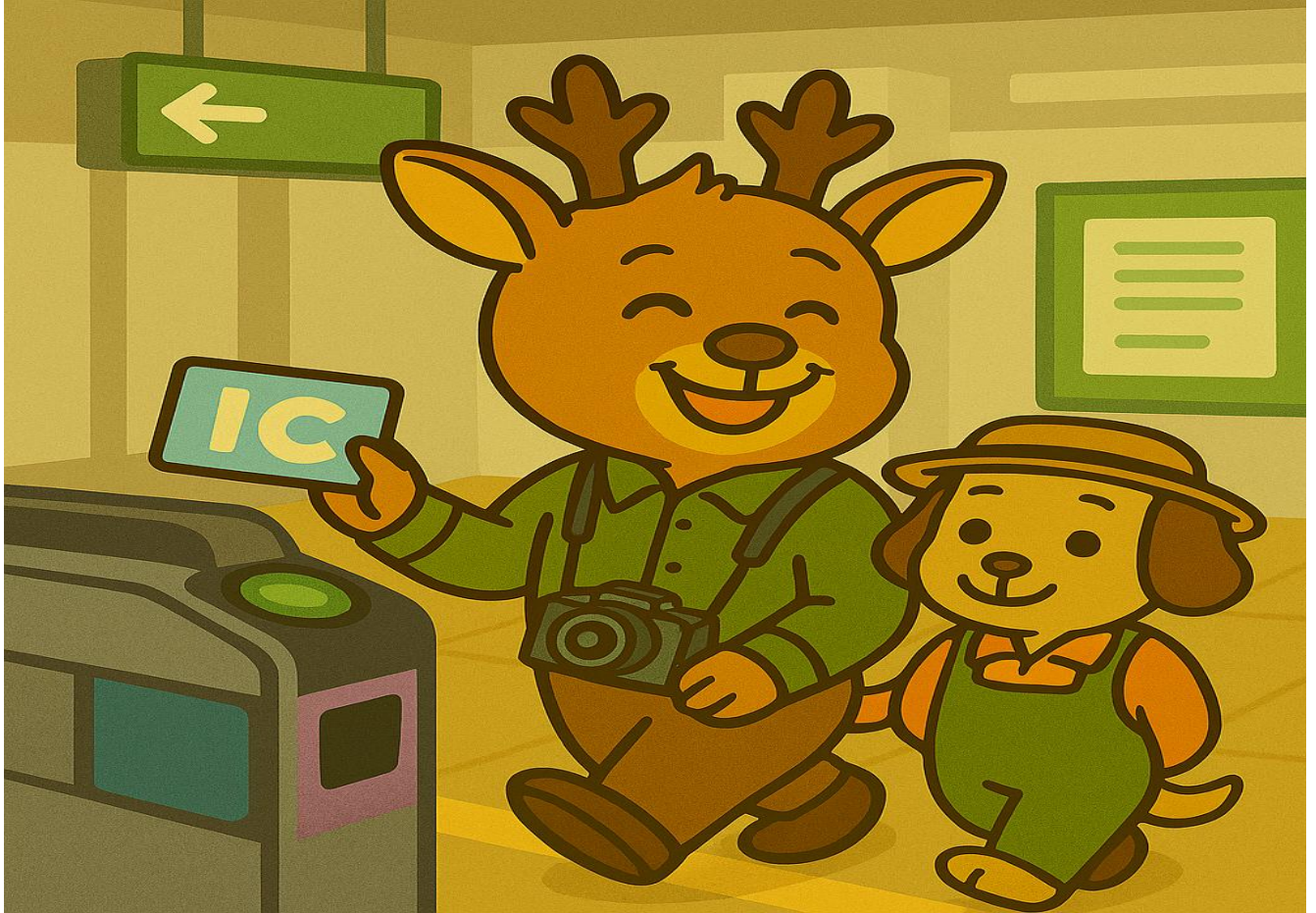
Don't: Forget to check pass-valid areas before boarding.



Tips for
Enjoying
Japan
More



Tap to Go IC cards



Use IC cards for trains, buses, lockers, and small buys.

IC Cards for Easy Travel

Do: Use IC cards (e.g., Suica, PASMO) for transport and small purchases.

Don't: Block ticket gates—tap smoothly and keep moving.



Tips for
Enjoying
Japan
More



Ride like a local: the quiet-car mindset



**Keep voices low, avoid phone calls,
and enjoy Japan's serene trains.**

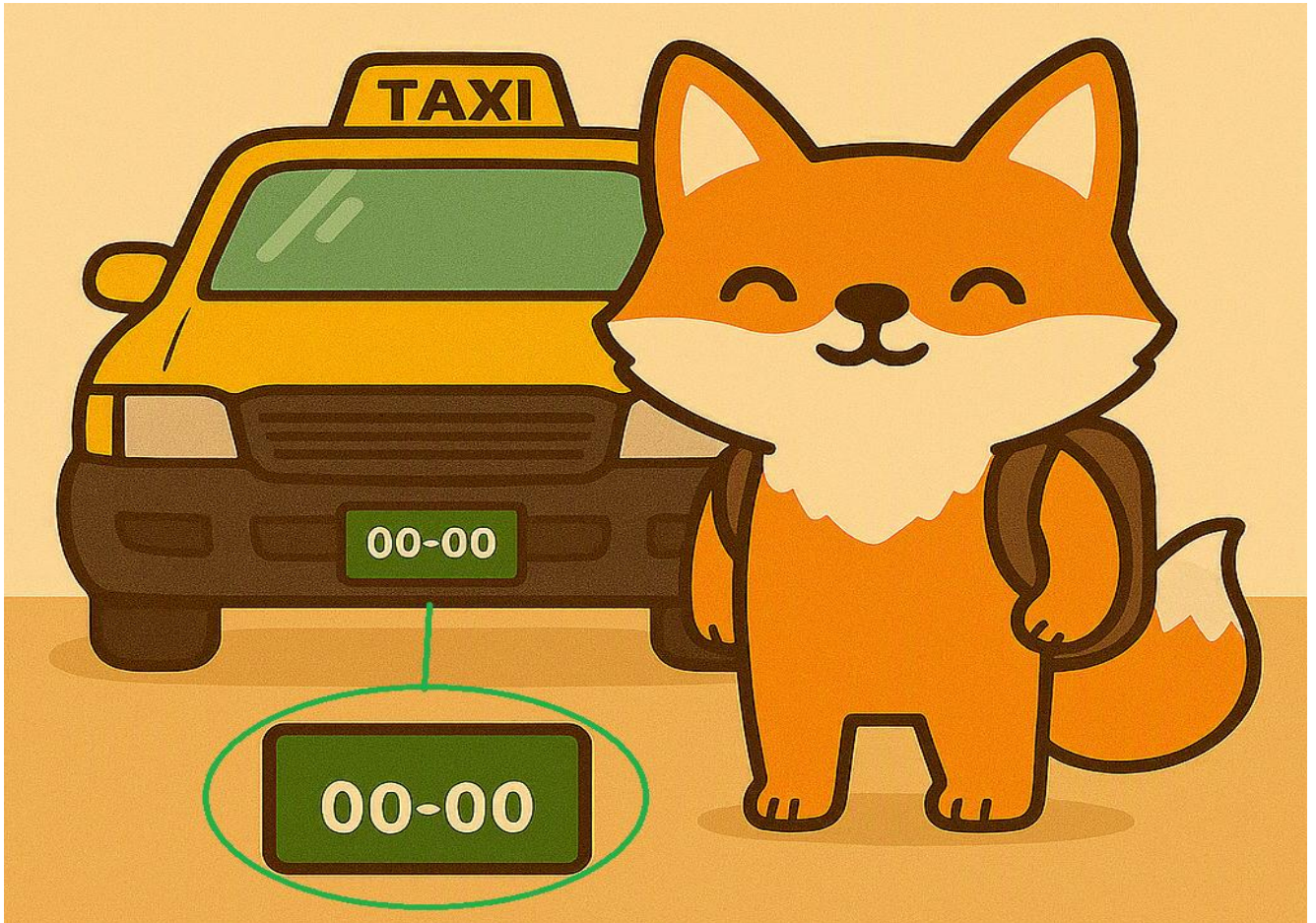
Quiet Public Transport

Do: Keep your voice low and enjoy the peaceful ride.

Don't: Make phone calls or play sounds without headphones.



Choose green-plate taxis for safe travel



Avoid illegal “white-plate”
(Shirotaku) cars and enjoy safe,
smooth service across Japan.

Choose Legal Taxis

Do: Use taxis with *green license plates* for safe service.

Don't: Take illegal “white-plate” (Shirotaku) cars.



Clean & Green

Carry a small trash bag



Trash bins can be limited—pack up your waste until proper disposal.

Carry Your Trash

Do: Bring a small trash bag, as public bins can be limited.

Don't: Leave trash behind in public spaces.



Better photos with a quick ask



Ask permission before photographing people or restricted interiors.

Respect Photo Rules

Do: Ask permission before photographing people or private spaces.

Don't: Take photos in restricted or sacred areas.



Shrines & Temples



Quick 3-step guide

Bow at the gate

**Purify
hands/mouth**

Pray respectfully

Visiting Shrines & Temples

Do: Bow at the entrance and purify your hands at the water basin.

Don't: Be loud, run, or take photos in prohibited areas.



Onsen like a pro: 5 golden rules



Wash First



Keep towel out



Keep hair out



Mind tattoos



Relax

Onsen Etiquette

Do: Wash your body thoroughly before entering the bath.

Don't: Put your towel or hair in the water, or enter if tattoos are restricted.



Tips for
Enjoying
Japan
More



Useful Information

Responsible Travel Guide

Your good manners help preserve the destinations you visit and will enrich your travels too.

Please check the website to become a “responsible traveler” in order to preserve your destinations for future generations



Japan Visitor Hotline

Japan National Tourism Organization (JNTO) operates a visitor hotline 24 hours a day, 365 days a year. Call for tourist information or assistance in the case of accidents and emergencies. Support is available in English, Chinese and Korean.

Name	Japan Visitor Hotline
Phone Number	050-3816-2787
From Overseas	+81-50-3816-2787
Service Hours	24 hours a day, 365 days a year
Languages Available	English, Chinese, Korean
Service Covered	Support & assistance in case of emergency or natural disasters.

Japan Safe Travel Information

This website is managed by Japan National Tourism Organization (JNTO), providing foreign visitors safety tips and latest information in case of natural disasters.



JNTO Safe Travel Information official SNS accounts

X (Twitter) @JapanSafeTravel / Weibo/微博 @安心访日JapanSafeTravel



About JNTO



Welcome to Japan!

The Japan National Tourism Organization (JNTO) is a public agency established in 1964, the year of the first Tokyo Olympics. Since then, we have worked for over 50 years as a designated organization for inbound tourism, playing a central role in promoting international visitors to Japan.

Designated as a budgetary implementation organization in 2015, we have supported the government's goal of becoming a tourism-oriented country through inbound tourism projects.

With overseas offices in 26 cities, JNTO leverages this network to conduct promotional activities, support conventions, analyze overseas trends, and assist local communities.



Japan National
Tourism Organization



Stay Connected

Explore the latest information:

JNTO TIC Call Center

JNTO TIC Call Center, operated by JNTO, provides telephone tourist information service for detailed and comprehensive information for all of Japan.



in Japan: 050-3416-0010
Daily from 9:00 to 17:00 (JST)

Instagram
[@visitjapanjp](https://www.instagram.com/visitjapanjp)



Facebook
Visit Japan International



Scan the QR codes to follow us
and plan your journey!

WELCOME TO JAPAN



Japan. Endless Discovery.



Tips for
Enjoying
Japan
More



2026.5

Some images generated with Microsoft 365 Copilot Chat.