

April 1, 2024

To All Members of the Press

Sumitomo Fudosan Villa Fontaine Co., Ltd.

Japan's Largest* Airport Hotel "Villa Fontaine Haneda Airport"

My Twenty Four

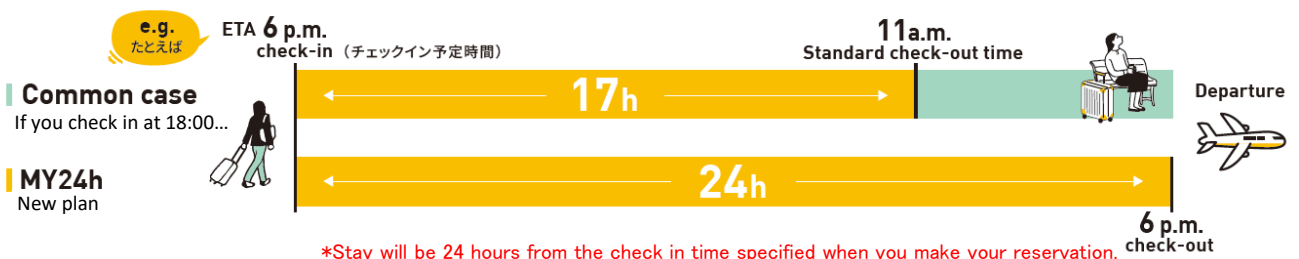
MY24h = Stay 24 hours anytime =

Creating a style of stay unique to "Haneda Airport," the 24H International Base Airport

Sumitomo Fudosan Villa Fontaine Co., Ltd. (Head office: Shinjuku-ku, Tokyo; President: Tomoyuki Komori; referred to below as "the Company") is, as of April 1, 17:00, offering the new program MY24h (My Twenty Four), which lets guests stay for 24 hours from their designated check-in time. This program will be offered at Sumitomo Fudosan Hotel Villa Fontaine Premier/Grand Haneda Airport (referred to below as "the hotel"), Japan's largest airport hotel with a total of 1,717 guest rooms, which is directly connected to Terminal 3 of Haneda Airport, the entrance to Japan's skies. MY24h does away with the concept of check in and check out times, a custom of the hotel industry. With MY24h, guests can stay for 24 hours from their desired time. It promotes use of the hotel's accommodation in accordance with the itinerary and flights of each guest from Japan and overseas, offering even more comfort and convenience. The hotel provides an exclusive free shuttle bus for guests, which goes to central areas and tourist spots such as Shibuya, Shinjuku, Akihabara, and Tokyo Disneyland (R). In addition, Haneda Airport Garden, in which the hotel is located, has a lineup of various kinds of content, including around 80 shops and restaurants, and a bus terminal that links up with the Hato Bus, which lets guests enjoy tourist spots that are mid and long distances away, and tourism in Tokyo. This program colors the 24 hours guests spend with it.

Official website: <https://www.hvf.jp/eng/hanedaairport-grand/>
Reservation URL: https://advance.reservation.jp/hvf/stay_pc/rsv/detail_plan_calendar.aspx?hi_id=18&lang=en-US&smp_id=262&to_pos=1&du=

How to use this new program MY24h



There is no longer a need to make an appointment in accordance with your hotel check in and check out times. Guests can use the hotel in accordance with their plans, and there are no extension fees.

- When arriving late at night or early in the morning, you can check in without having to wait for a check in start time.
- You can check in according to your flight arrival time, and can reduce the time you spend waiting in the airport.
- Long stays are always possible, so you can enjoy tourism and shopping using the shuttle bus.

*Our hotel has the largest number of guest rooms in the same building for airport hotels in Japan. (Research by JTB Tourism Research & Consulting Co. September 2022)

<For media inquiries regarding these matters, please contact:>

PR Manager, Sumitomo Fudosan Villa Fontaine Co., Ltd. TEL : 050-3112-3983

E-Mail : vfpr@j.sumitomo-rd.co.jp

MY24h Accommodation Plan Information



Check-in/out

Your Day. Your Stay.

You can always check in, 24 hours. You can stay for a maximum of 24 hours.



Stay.

Room Only Plan

- ◆ Room only
- ◆ Reference Price From 12,000 yen
 - *1 room for 2 people / fee for 1 person
 - *This price includes all tax and is subject to change.
- ◆ Reservation Details

https://advance.reservation.jp/hvf/stay_pc/rsv/detail_plan_calendar.aspx?hi_id=18&lang=en-US&smp_id=259&to_pos=1&du=

Hot Spring Bathing Ticket Included Plan

- ◆ Includes hot spring bathing ticket for Izumi Tenku no Yu Haneda Airport
- ◆ Reference Price From 14,000 yen
 - *1 room for 2 people / fee for 1 person
 - *This price includes all tax and is subject to change.
- ◆ Reservation Details

https://advance.reservation.jp/hvf/stay_pc/rsv/detail_plan_calendar.aspx?hi_id=18&lang=en-US&smp_id=262&to_pos=1&du=

Breakfast Included Plan

- ◆ Includes breakfast at the hotel restaurant All Day Dining Grand Aile
- ◆ Reference Price From 14,800 yen
 - *1 room for 2 people / fee for 1 person
 - *This price includes all tax and is subject to change.
- ◆ Reservation Details

https://advance.reservation.jp/hvf/stay_pc/rsv/detail_plan_calendar.aspx?hi_id=18&lang=en-US&smp_id=261&to_pos=1&du=



Superior Twin Guest Room Image



Fujimi no Yu
On days with good weather, you can see Mt. Fuji.



Breakfast Buffet Image

Departs from Haneda Airport Garden! Enjoy Tokyo tourism with Hato Bus

The Hato Bus tour bus operates every day except for Wednesday. Its route is packed with famous Tokyo spots, and it departs from the bus terminal in 1F of the same facility as Villa Fontaine Haneda Airport.

This course lets you get a lot of enjoyment out of Tokyo's classic tourist spots Asakusa and TOKYO SKYTREE (R), and for TOKYO SKYTREE (R), includes entrance to both the Tembo Galleria and Tembo Deck. For lunch, beef hotpot is prepared at the long-standing Asakusa restaurant Yonekyu, letting you enjoy the atmosphere of Japan's traditional Shitamichi neighborhoods!



Course Information

- 10:00 Depart from Haneda Airport Garden
- ↓
- 11:00 Depart from Tokyo Station Marunouchi South Exit
- ↓
- Beef hotpot lunch at "Yonekyu" in Asakusa
- Travel on foot
- Free walking around Asakusa Kannon and Nakamise
- ↓
- TOKYO SKYTREE – Tembo Galleria and Tembo Deck
- ↓ -From bus window, Kabuki-za - Ginza
- Around 16:40 Arrive at Tokyo Station Marunouchi South Exit
- ↓
- Around 17:20 Arrive at Haneda Airport Garden

Convenient shuttle bus that operates from Villa Fontaine Haneda Airport

This bus operates connecting Villa Fontaine Haneda Airport - Shibuya, Shinjuku and Akihabara (return route - Shinjuku and Akihabara only), Villa Fontaine Haneda Airport - Tokyo Disneyland (R), as well as Haneda Airport Garden and Ariake Garden.

Shuttle bus from Villa Fontaine Haneda Airport for Shibuya, Shinjuku, and Akihabara

As a route for enjoying Tokyo tourism, guests go to central areas of Tokyo without transferring by bus from the hotel. You can depart in the morning and return at night and can enjoy gazing at Tokyo scenery from the bus window, as well as strolling at various tourist spots from arrival to departure.

<Check here for details on shuttle buses that go to Tokyo's central areas (Japanese)>

https://www.hvf.jp/hanedaairport-grand/news/detail_1637.html

<How to Reserve>

For hotel guests only. Reservation not needed, first come first serve.

Shuttle bus from Villa Fontaine Haneda Airport to Tokyo Disneyland (R)

This bus operates in accordance with the park's opening and closing times and connects the park with our hotel.

◆Outbound (Duration: Around 40 minutes)

Departs 7:20 a.m. From [Villa Fontaine Haneda Airport]

Arrives 8:00 a.m. At [Tokyo Disneyland (R)]

◆Return (Duration: Around 50 minutes)

Departs 10:00 p.m. From [Tokyo Disneyland (R)]

Arrives 10:50 p.m. At [Villa Fontaine Haneda Airport]

<How to Reserve>

For hotel guests only. Advance reservation is required for boarding.

Guidance on how to reserve is provided to guests who have made hotel reservations, so please check your reservation confirmation e-mail or inquire with our hotel.



Shuttle bus connecting Haneda Airport Garden and Ariake Garden (Garden Shuttle)

A free shuttle bus operates between Haneda Airport Garden, which is directly connected to Terminal 3 of Haneda Airport, and Ariake Garden, located in the Tokyo Bay area.

Making transportation from Haneda Airport to the Ariake area more convenient makes the stays of overseas tourists in Japan more pleasant and revitalizes tourism in the Tokyo Bay area. The Ariake area is extremely convenient as a base for business and tourism. It gathers several excellent spots, including Odaiba, which is popular with overseas tourists as an entertainment area lined with commercial facilities and tourist spots, as well as large-scale convention centers and sports competition facilities.



Check this webpage for details

https://www.hvf.jp/eng/hanedaairport-grand/news/detail_1416.html

About All Day Dining Grand Aile

All Day Dining can be used from early in the morning to late at night. It uses seasonal ingredients, and guests can enjoy a rich variety of cuisine as a buffet or a la carte items.

In the Sizzling Kitchen, the chefs cook right in front of your eyes, and they serve freshly cooked dishes. In this spacious restaurant, enjoy viewing and eating the delicious food.



Restaurant interior



Dinner buffet image

【Business Hours】

BREAKFAST BUFFET	: 06:00-10:00
LUNCH BUFFET	: 11:00-15:00
Café à la carte	: 15:00-17:00
DINNER BUFFET	: 17:00-22:00
NIGHT à la carte	: 22:00-25:00

Information on day trip plan “Day Use”

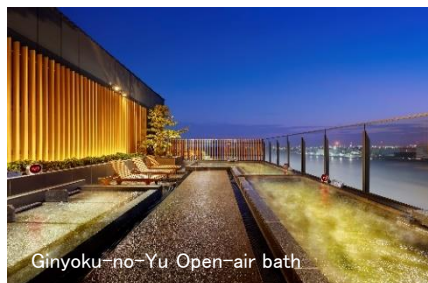
Villa Fontaine Haneda Airport offers a "Day Use" plan, which lets guests stay for a maximum of 4 hours, and lets them check in 24 hours any time.

Head straight to Haneda Airport after work. Take a short rest before boarding a late night flight, or rest in a bed for a short while before heading to work after arriving at Haneda Airport on an early morning flight. Short stay plans are available to meet the needs of guests like these.

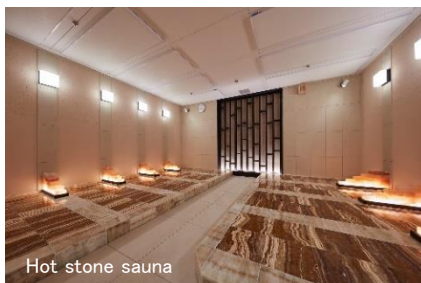
Reservation Details (Japanese) : <https://www.hvf.jp/hanedairport-grand/plan/?c=6>

About Natural Hot Spring IZUMI TENKU no Yu Haneda Airport

A complex-style hot spring facility that is open 24 hours a day, and is fully equipped with hot stone saunas, saunas, relaxation, restaurants and resting spots, including natural hot springs. Here, guests can heal the tiredness they feel before and after flights. It can be used for day trips and is optimal for using in the intervals between late night and early morning flights.



Ginyoku-no-Yu Open-air bath



Hot stone sauna



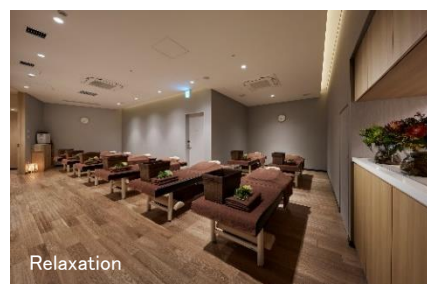
Sauna (Dry sauna)



Restaurant Izumi Tenku

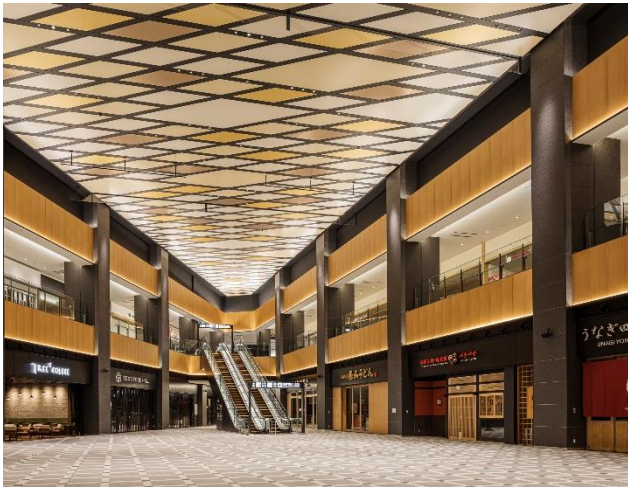


Rest area



Relaxation

About Haneda Airport Garden



Haneda Airport Garden is a large-scale complex with a concentration of various facilities including event halls and conference rooms for MICE, natural hot springs with a view that lets guests see Mt. Fuji and airplanes, bus terminals that connect various parts of Japan, such as local cities and tourist spots, goods stores that deal in famous products and travel goods that let one feel Japanese culture, and a diverse lineup of dining establishments from hotel restaurants to food courts. It was created in accordance with Haneda Airport becoming an airport that is a 24-hour international base and was established centered on the airport hotel with a total of 1,717 guest rooms (with 2 brands – Premier and Grand), which combines hospitality and possibilities that are worthy of the world's hub airport, in order to meet the diverse needs of guests.

- Sumitomo Fudosan Shopping City Haneda Airport Garden / <https://www.shopping-sumitomo-rd.com/haneda/shopping>
- Sumitomo Fudosan Hotel Villa Fontaine Premier Haneda Airport / <https://www.hvf.jp/hanedaairport-premier/>
- Sumitomo Fudosan Hotel Villa Fontaine Grand Haneda Airport / <https://www.hvf.jp/hanedaairport-grand/>
- Natural hot spring Izumi Tenku no Yu Haneda Airport / <https://www.shopping-sumitomo-rd.com/haneda/spa-izumi/>
- Bellesalle Haneda Airport / <https://www.hvf.jp/eng/hanedaairport-grand/banquet/>

About Sumitomo Fudosan Villa Fontaine

Sumitomo Fudosan Villa Fontaine operates the Villa Fontaine series of high-grade urban hotels, mainly in central Tokyo, featuring locations with excellent transportation access, spacious and roomy guest rooms, comfortable beds, and stylish interiors, and in December 2022, opened Japan's largest airport hotel, Villa Fontaine Premier/Grand Haneda Airport, at Haneda Airport.

In addition, the hotel chain owns 21 hotels with 5,384 rooms, including this hotel, such as "Village Izu Kogen" and "Village Kyoto," hotels for resort and sightseeing use, and "inumo shibakoen," where you and your dog can enjoy staying together.



VILLA FONTAINE PREMIER

Haneda Airport

VILLA FONTAINE GRAND

Haneda Airport, Tokyo-Ariake, Tokyo-Shiodome, Tokyo Roppongi, Tokyo Tamachi, Osaka Umeda

VILLA FONTAINE

Tokyo-Hamamatsucho, Tokyo-Hatchobori, Tokyo-Kayabacho, Tokyo-Nihombashi Mitsukokoshimae, Tokyo-Nihombashi Hakozaiki, Tokyo-Kudanshita, Tokyo-Jimbocho, Tokyo-Otemachi, Tokyo-Shinjuku, Tokyo-Ueno Okachimachi, Kobe-Sannomiya

VILLAGE

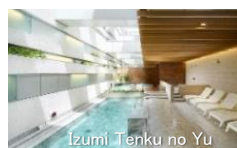
Izu Kogen, Kyoto

inumo shibakoen by Villa Fontaine

Sumitomo Fudosan Villa Fontaine

We are the company within the Sumitomo Realty & Development Group

that handles the **hotel business**



"Izumi Tenku no Yu" hot spring facility began operation in 2020.

