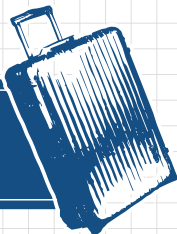


Sample Course

C.m2

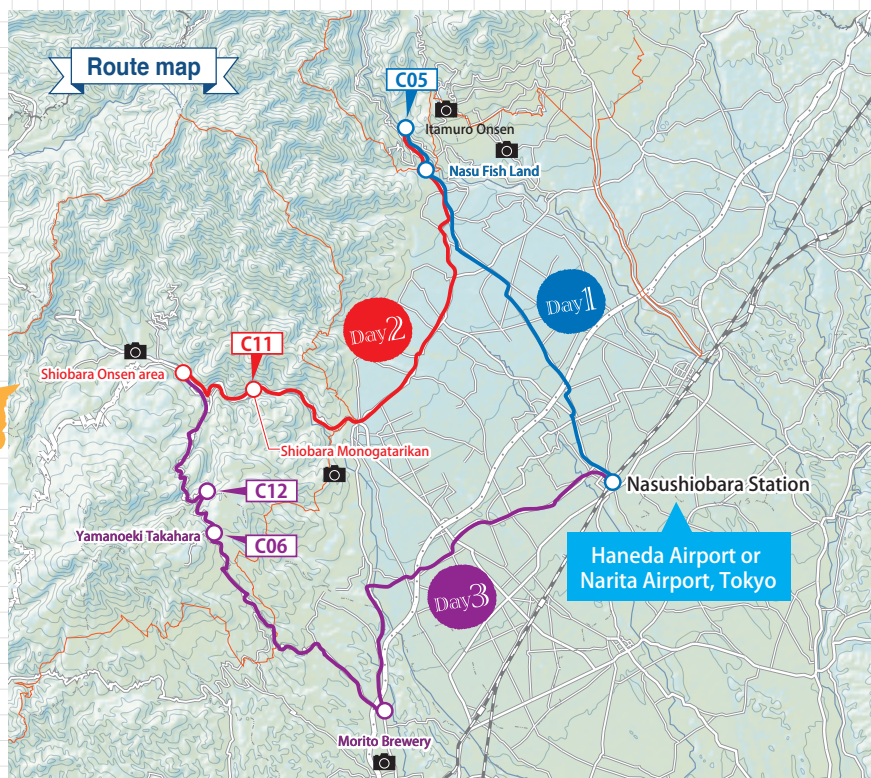


Shiobara and Yaita: NIKKO is NIPPON - Water's Gifts Course

3days, 2nights

Highlights

- Have fun with various activities that put you in touch with Nikko's many beautiful waters.
- Visit hot springs in a number of historical onsen towns, all with their own distinctive characteristics. The tour includes Shiobara Onsen Village, famous for its milky baths in seven different colors known locally as a treasure trove of hot springs, and the healing baths of Itamuro Onsen.
- This course can be enjoyed by all, from young children to the elderly.



Day 1

Haneda Airport or Narita Airport, Tokyo

↓ Tohoku Shinkansen

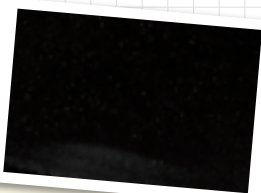
10:30am

JR Nasushiobara Station

↓ Rental car 30min

11:00am

Lunch at Nasu Fish Land 📷



Enjoy fishing in this natural pond. If you're lucky enough to catch a fish, you can even have it for lunch.

↓ Rental car 10min

12:50pm

[C05] Itamuro Dam Lake Canoe Tour

↓ On foot

3:00pm

Itamuro Kenko no Yu Green Green 📷

↓ Rental car 30min

4:30pm

Accommodation in the Itamuro Onsen area



Itamuro Onsen is also known as "Shimotsuke no Kusuriyu" medicinal bath because of its well-known toji (healing hot spring waters). At Tsunanoyu, you can experience a distinctive bathing style where you hold a rope as you dip yourself into the relaxing waters.

Day 2

9:15am

Depart accommodation in the Itamuro Onsen area

↓ Rental car 45min

10:00am

[C11] Nature walk along the Shiobara Gorge

135min

↓ Rental car 10min

12:10pm

Lunch at Shiobara Monogatari-kan 📷



↓ On foot or by rental car

1:15pm

Shiobara Onsen 📷



Enjoy dipping into a number of hot springs in Shiobara Onsen Town, a village blessed with various kinds of natural spring waters. Taste Toteyaki, a crepe-like treat famous in Shiobara and made with locally sourced ingredients to countless recipes, a must try if you want to eat on the move!

↓ Rental car

6:00pm

Accommodation in the Shiobara Onsen area



Day 3

Option A

8:30am

Depart accommodation in the Shiobara Onsen area

↓ Rental car 30min

9:00am

[C12] Mount Takahara Family Canyoning

150min

↓ On foot 30min

1:00pm

Lunch at Yamaoeki Takahara

↓ Rental car 30min

Option B

9:00am

Depart accommodation in the Shiobara Onsen area

↓ Rental car 25min

9:30am

[C06] Sukkanzawa River Waterfall Walking Tour

270min

↓ Rental car 30min

[Common to Option A and B]

2:30pm

Morito Brewery 📷

↓ Rental car 30min

6:00pm

JR Nasushiobara Station

Depart for Tokyo Station



Appreciate the taste of rice wine at a sake brewery that utilizes beautifully fresh spring water that flows through Nikko National Park.