

Sample Course

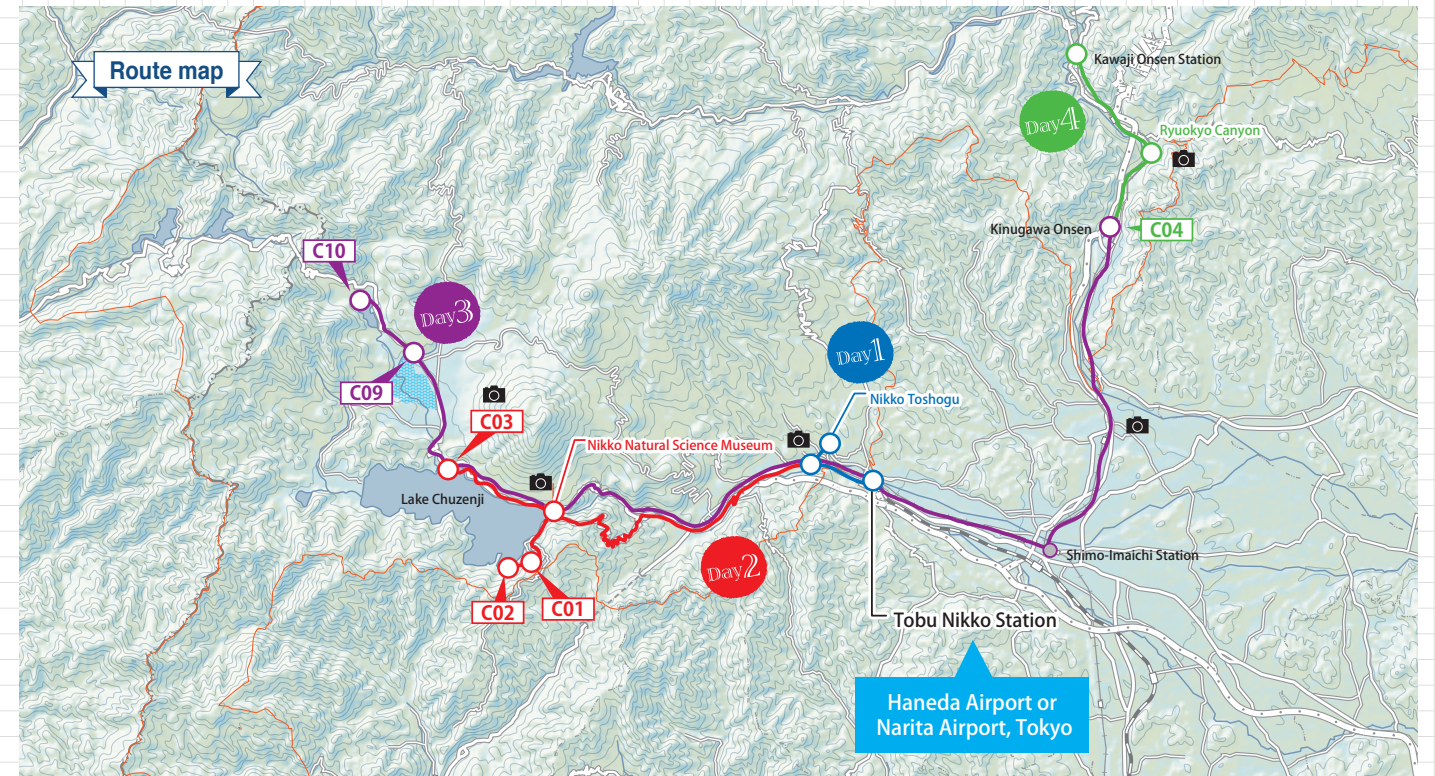
C.m1

Nikko and Kinugawa:  
NIKKO is NIPPON -  
Premium Resort Course

4days,3nights

Highlights

- Explore the history, culture, and scenery of the national park through the shrines and temples of Nikko which are a designated UNESCO World Heritage Site, as well as the Ramsar Site of Oku-Nikko High Moor.
- Experience the scenery of the same summer resort beloved by the Imperial Household and the first Western diplomats to Japan.
- Travel passes are available, so you are able to use most buses and trains as much as you like for a very reasonable price.



Day1

Haneda Airport or Narita Airport, Tokyo

↓ Tobu Nikko Railway

10:21am

Tobu Nikko Station

↓ Fixed-route bus 5min

10:30am

Kimono Experience

- Cocon Nikko
- Utakata
- Salon de Nikko

↓ On foot 15min

11:15am

Visit the World Heritage site of Shrines and Temples of Nikko

- Nikko Toshogu
- Nikko Futarasan Shrine
- Nikko Rinnoji Temple, etc.

↓ On foot 15min

1:30pm

Lunch at the Japanese restaurant Takaiya



Enjoy sampling Nikko yuba, soymilk skin, which was served as part of vegetarian meals eaten by ascetic monks training at Nikko's shrines and temples. Visitors can experience the history of this area through its traditional food.

↓ On foot 10min

2:40pm

Nikko Tamozawa Imperial Villa Memorial Park



Here you can view unique buildings which expertly fuse traditional Japanese architecture from the Edo era (1603-1868) to Taisho period (1912-1926) with Western culture, as well as experience the luxurious resort enjoyed by the Japanese Imperial Household during the summer.

3:40pm

Stroll through Nishimachi



↓ On foot 10min

4:50pm

Return kimono

↓ Fixed-route bus 10min

5:30pm

Accommodation near the World Heritage site

Tour the grand former Imperial Villa

Discover the historical town neighboring the Imperial Villa!

Explore this charming temple town at your own pace where you can experience authentic Nikko's culture for yourself. Sightseeing spots include crafts, Nikko Coffee located inside an atmospheric traditional Japanese house, Kanaya Hotel History House, and much more.

Day2

8:30am

Depart from accommodation near the World Heritage site

↓ Fixed-route bus 50min

9:20am

Nikko Natural Science Museum

↓ Rental bicycle 30min



Take in the beautiful scenery while cycling along the lakeside, and enjoy the feeling of wind and sun on your face.

10:00am

Lake Chuzenji SUP (Stand Up Paddle Board) Experience

↓ On foot

12:30pm

Lunch at the Coffeehouse Yukon

The local specialty "Hundred-Year Rice Curry" is a Western-style curry that adheres to a unique and flavorful 100-year-old recipe. Taste for yourself the dish that locals and holiday makers alike have enjoyed over the decades at this international summer resort.

↓ On foot

1:30pm

Lake Chuzenji Boat House



Experience the atmosphere of this historic summer resort which still retains a strong sense of its charming past. Watch out for boats reserved for embassy use and displays showcasing the history of fly fishing in the area.

↓ Rental bicycle 30min + On foot 10min

2:25pm

Italian Embassy Villa Memorial Park

↓ On foot 2min

3:00pm

British Embassy Villa Memorial Park

↓ On foot 5min + Rental bicycle 15min

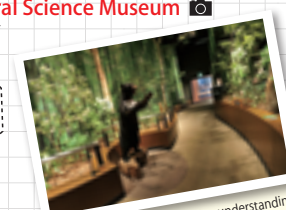
4:15pm

Nikko Natural Science Museum

Return your rental bicycle and tour the local museum.

5:00pm

Accommodation in the Chuzenji Onsen area



Gain a comprehensive understanding of Nikko by learning about the history of Nikko National Park, located in the heart of sacred Oku-Nikko and including a UNESCO World Heritage site, through displays and videos in the museum.

Day3

8:30am

Depart accommodation in the Chuzenji Onsen area

↓ Fixed-route bus 30min

9:00am

Senjogahara Guided Tour

180min

↓ Fixed-route bus 30min

1:30pm

Onsenji Temple Sutra Writing Experience

60min

↓ Fixed-route bus

3:30pm

Tobu Nikko Station

↓ Tobu Railway

Shimo-Imaichi Station

↓ Tobu Railway 10min

4:32pm

Board the Taiju SL Train

5:00pm

Kinugawa Onsen Station

Accommodation in the Kinugawa Onsen area



Day4

9:00am

Depart accommodation in the Kinugawa Onsen area

↓ On foot 35min

9:35am

Kinugawa River Boat Tour

70min

↓ Shuttle bus 15min

11:00am

Kinugawa Onsen Station

↓ Yamanote Railway 10min

11:15am

Stroll through Ryuokyo Canyon

12:30pm

Kawaji Onsen Station

Depart for Asakusa Station



Beautiful valleys are formed by an abundance of spring waters that flow here in Nikko National Park.