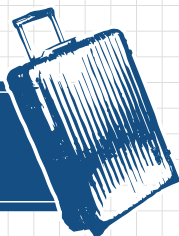


Sample Course

D.m3

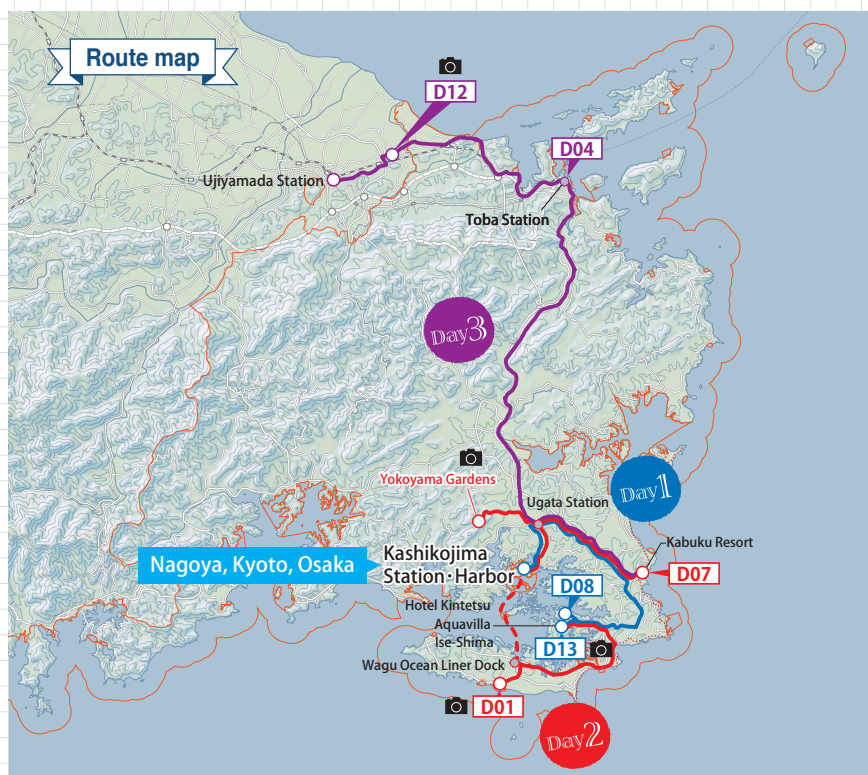


Seas of Ise-Shima and Cultivated Sea Fields Course

3days,2nights

Highlights

Take in the stunning seas of Ise-Shima, one of the regions known for the custom of producing food ingredients for the Imperial household called mitsukekuni. You too can sample seafood from satumi, cultivated sea fields, observe pearl farming, and meet the local ama female divers in the beautiful setting of Ago Bay's rare ria coast.



Day 1

12:00pm

Nagoya, Kyoto, Osaka

↓ Sightseeing Limited Express Train "Shimakaze" 75~120min

1:30pm

Kashikojima Station

↓ Free shuttle bus 30min

1:55pm

Hotel Kintetsu Aquavilla Ise-Shima

[D08] Sea Kayak Tour

150min

After enjoying lunch in a luxurious train carriage, we make our way to Ise-Shima!

Enjoy exploring the charming walking route located within the spacious hotel grounds!



The sight of the numerous aquaculture rafts floating on the beautiful coast of Ago Bay is a testament to local people living in harmony alongside nature. These cultivated coastal sea fields are referred to as satumi in Japanese.

[D13] Explore the Tomoyama Park area

National Parks of Japan

The Yokoyama Observation Deck offers a sweeping view of Ago Bay, which is ranked in the top ten of TripAdvisor's best observation decks in Japan.

Day 2

8:30am

Hotel Kintetsu Aquavilla Ise-Shima

↓ Taxi 60min

9:30am

[D01] Sea Diving With Ama Female Divers

120min

11:30am Grilled Seafood Lunch at an Ama Female Divers' Cabin

Wagu Ocean Liner Dock

↓ Ocean Liner 25min

Kashikojima Harbor

Kashikojima Station

↓ Local train 5min

Ugata Station

↓ Rental car or rental bicycle



Enjoy the scenery of Ise-Shima National Park. The uninterrupted view of the island-dotted coast, complemented by the sight of sea rafts floating in the bay makes for an unforgettable vista.

2:15pm

Explore Yokoyama Picnic Site. Including Yokoyama Observatory, Sozo-no-Mori, and more

↓ Rental car or rental bicycle 30min

4:45pm

Kabuku Resort

[D07] Glamping experience

Day 3

8:30am

Kabuku Resort

↓ Rental car or rental bicycle 30min

Ugata Station

↓ Local train 34min

9:48am

[D04] Fish to Your Heart's Content! Boat Fishing Tour with Professional Fisherman

240min

↓ Taxi



Make your very own Akoya pearl accessory while learning about the history of pearl culture in the area. Your jewelry will always serve as a reminder of your visit to Ise-Shima National Park!

[D12] Making Akoya Pearl Accessories at Ise City

60min

↓ Taxi

4:00pm

Ujiyamada Station

↓ Kintetsu Express 90~120min

Nagoya, Kyoto, Osaka