

Sample Course

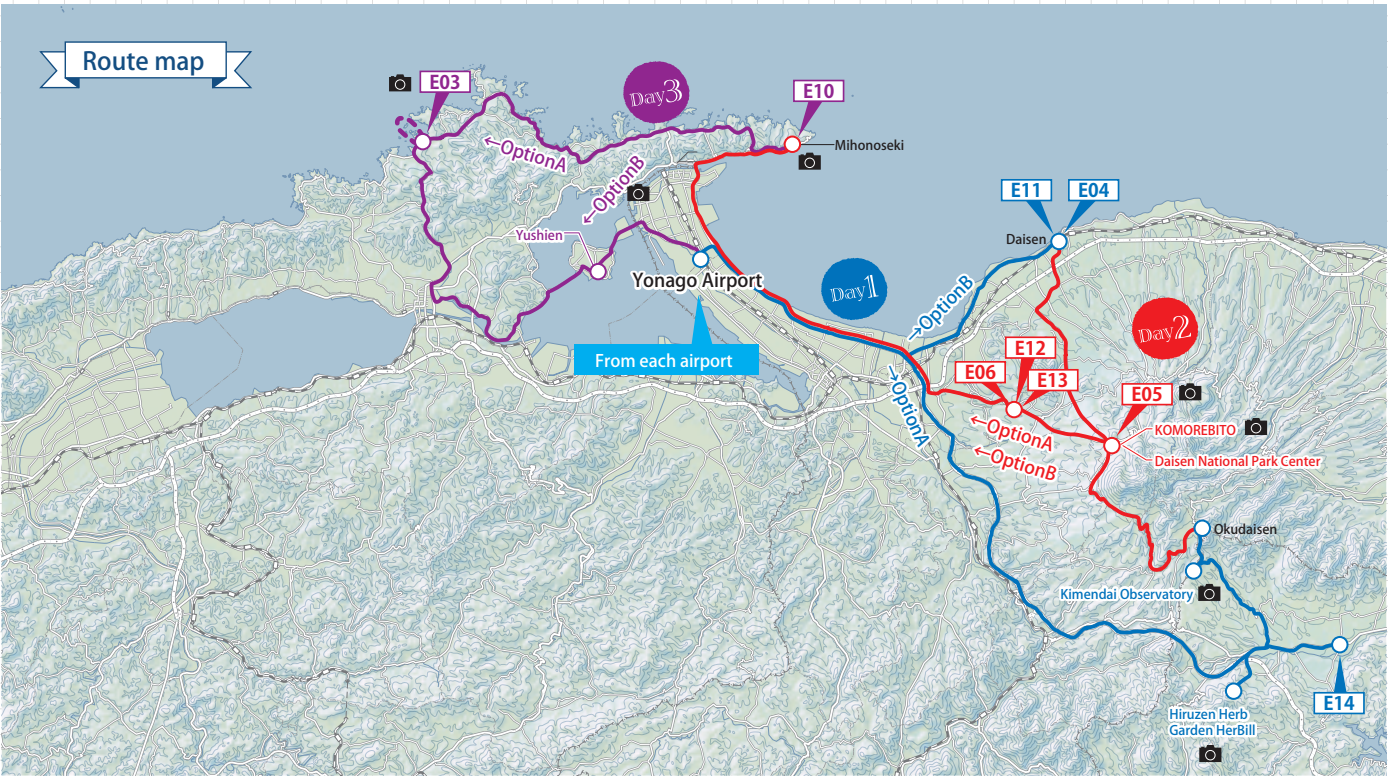


Daisen Parkway Course

3days,2nights

Highlights

- Enjoy the stunning sights of both mountains and sea in close proximity on this circular route. The Daisen area is positively overflowing with character so that it looks like it was handcrafted by the gods themselves. Awaken all your senses and experience it for yourself!
- Explore a driving route from Hiruzen, to Daisen, and then on to Mihonoseki which takes you through the national park's many mountains to the coast and the seas beyond. Enjoy a large range of nature and activities depending on the season.
- At Daisen-Oki National Park explore mountainous and oceanic terrain uniquely linked to ancient beliefs and spiritualism. Discover a landscape that still seems alive with the gods' fleeting forms, as well as the way of life of the people who makes these lands their home.



Day 1

Common courses

9:45am  
Haneda Airport

↓ Plane 80min

10:55am  
Yonago Airport

↓ Rental Car 75min

12:30pm

Hiruzen Herb Garden HerBill

↓ Rental Car 20min

Option A

Cycling at the plateau and Enjoy the starry sky

2:00pm

E14 Hiruzen Cycling Tour

↓ Rental car 20min

5:00pm

Kimendai Observatory

↓ Rental car 10min

5:30pm

Lodging in Okudaisen or Hiruzen (National Park Resort Kyukamura)

↓ Rental car 10min

8:00pm

E11 Daisen Stargazing Tour

↓ Rental car 10min

10:15pm

Lodging in Daisen or Hoki

Option B

Japanese Giant Salamander Wildlife

3:30pm

E04 Japanese Giant Salamander Wildlife Tour

↓ Rental car 70min

Lodging in Daisen or Hoki (Resort Hotel or Glamping)

90min



Day 2

Common courses

8:20am

Lodging in Daisen or Hoki

↓ Rental car 10min

8:30am

Daisen National Park Center

↓ Rental car

Option A

Mountain climbing Daisen and hot spring

9:00am

Mountain climbing Daisen

↓ On foot 180min

12:00pm

Lunch at Oyama summit peak

↓ On foot 150min

3:30pm

Hot spring bathing in Goenyuin

↓ On foot 5min

4:35pm

Sunset at Sunset Cafe Komorebito



↓ Rental car 75min

6:20pm

Dinner at accommodation in Mihonosekicho

Option B

Enjoy Daisen's Nature

9:00am

E05 Beech Forest Walk and Daisen Spiritual Walk

↓ On foot 180min

12:00pm

Lunch at Mountain peak of Daisen

↓ On foot 15min

1:15pm

E06 Daisen Downhill Cycling

↓ Private Transport 30min

5:00pm

Sunset at Sunset Cafe Komorebito

↓ Rental car 75min

6:45pm

Dinner at accommodation in Mihonosekicho

Day 3

Common courses

Early Morning  
Lodging in Mihonoseki

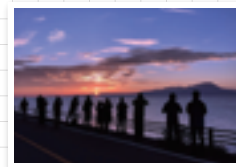
↓ On foot 1min

Observe Local

Fishermen Present

the Catch of the Day

Watch the Sunrise



↓ Private Transport 5min

Lodging in Mihonoseki

↓ On foot 5min

6:50am

E10 Participate in Miho Shrine Morning Services

(During the sightseeing Return to the accommodation and have breakfast)

↓ On foot 5min

Lodging in Mihonoseki

Common courses

Lodging in Mihonoseki

↓ On foot

After Sunset

Aoishidatami Street Illuminations



"Aoishidatami" is one of the oldest paved roads in all of Japan. Traditional houses line the narrow path paved with pale blue stones, giving you a true taste of life in Japan of old. When softly lit by Japanese hanging lanterns, you'll come to understand the distinctly Japanese veneration for the subtle aesthetics of shadows.

↓ On foot

9:00pm

Japanese Style Standing Bar Tachichu

↓ On foot

10:00pm

Lodging in Mihonoseki

[Seasonal Activities]

E12 Ravine Climbing with Waterfalls in Daisen (Summer Only)

E13 Daisen Snowshoe Tour (Winter Only)

Option A  
Kakanokukedo Pleasure boat and Japanese garden

9:50am

Lodging in Mihonoseki

↓ Rental car 70min

11:00am

Matsue Visitor Center

↓ On foot 5min

E03 Kakanokukedo Sightseeing Boat

↓ Rental car 40min

1:00pm

Japanese garden Yuushien (Lunch and tour)

↓ Rental car 20min

4:00pm

Yonago Airport

↓ Plane 85min

6:30pm

Depart for Haneda Airport

Option B  
Pleasure flight in Matsue and Japanese garden

9:10am

Lodging in Mihonoseki

↓ Rental car 50min

10:30am

Pleasure flight with amphibious airplane  
Pleasure flight in Matsue



↓ Rental car 10min

11:40am

Japanese garden Yuushien (Lunch and tour)

↓ Rental car 20min

1:30pm

Yonago Airport

↓ Plane 85min

3:55pm

Depart for Haneda Airport

Round over Matsue (City of Water) and the National Park with amphibious aircraft