

Sample Course

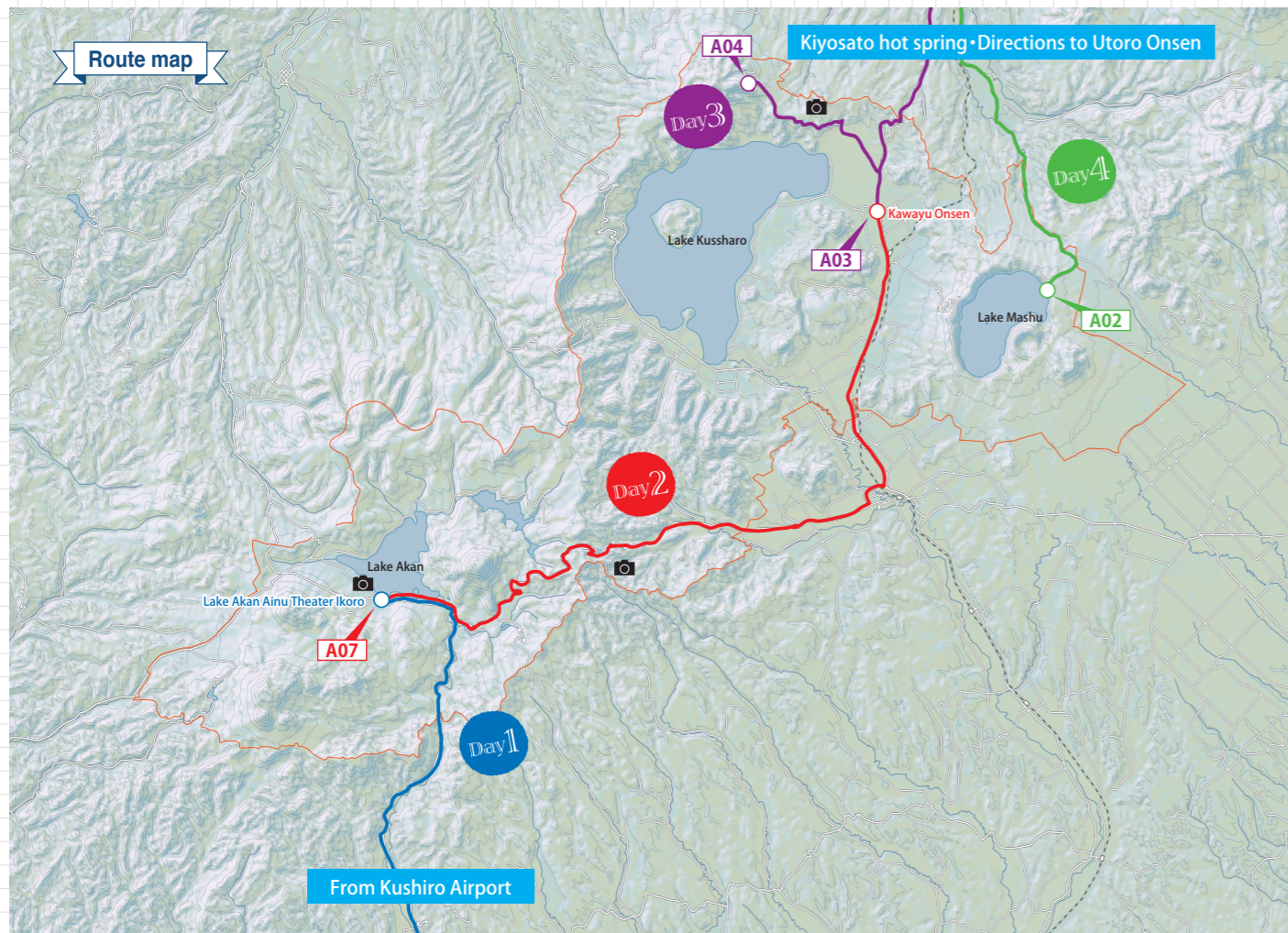
A.m2

Ainu Culture and 3 Caldera Experience Course

5days,4nights

Highlights

- See for yourself the world class caldera of Akan-Mashu National Park. The dynamic landscape that sprawls out from the magnificent expanse is sure to take your breath away.
- Explore the caldera which is an extremely rare phenomenon in the world and discover Ainu lifestyle and culture that lives on in the caldera.
- Experience the primeval nature of Akan Mashu National Park which spans a tapestry of volcanoes, forests and lakes that extends across Hokkaido.



Day1

Your nearest airport

↓ Airplane

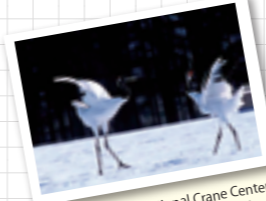
(departure time) 2:00pm

Kushiro Airport

↓ Rental car 30min

2:30pm

Akan International Crane Center



Akan International Crane Center is where the practice of hand-feeding where the cranes originated. There is an exhibition and video corner providing simple explanations of the cranes' environment and behavior, and it is possible to observe them in conditions that closely mirror their natural habitat.

National Parks of Japan

↓ Rental car 40min

4:40pm

Accommodation in Akankohan

↓ On foot or by theater shuttle bus 10min

8:00pm

Lake Akan Ainu Theater Ikoro



Ainu Culture is alive in Akan Mashu National Park. The Ainu people have lived here in harmony with nature from antiquity to the present day. Get in touch with their spirit through their traditional dances passed down through the generations.

↓ On foot or by theater shuttle bus 10min

8:40pm

Accommodation in Akankohan

Day2

9:55am

Accommodation in Akankohan

↓ Rental car 5min

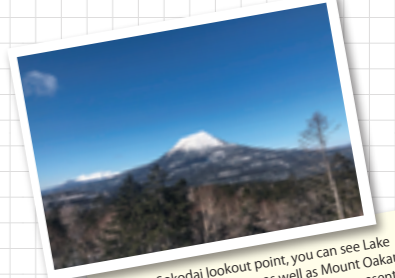
10:00am

A07 Akan River Walk Tour 180min

↓ Walk 15min

1:15pm

Restaurant in Akan Onsen Town



From the Sokodai lookout point, you can see Lake Penketo and Lake Panketo, as well as Mount Oshima and Mount Meakan, the mountains that represent Akan Mashu National Park.

↓ Rental car 120min

4:30pm

Accommodation in the Kawayu Onsen area

Visit Sokodai and Sogakudai lookout points en route. Rest up and enjoy souvenir shopping at Mashu Onsen Roadside Station.

Day3

5:00am

A03 Lake Mashu Sea of Clouds Tour 90min

Accommodation in the Kawayu Onsen area

↓ On foot or by rental car

10:00am

Walk around Kawayu Onsen town and enjoy lunch



If you get close to the active volcano of Mount Ito, it's just as if you can feel the heartbeat of the earth itself. In addition, the masses of Isotsutsuji azaleas that bloom at the foot of the smoking Mount Ito from late June to early July are truly a sight to behold.

↓ Rental car 30min

1:00pm

A04 Mount Mokoto Bird Watching Tour 150min

↓ Rental car 90min

5:10pm

Accommodation in the Kiyosato Onsen area

Relax and shop at the Kiyori Information Center midway.

Day4

10:00am

Accommodation in Kiyosato Onsen

↓ Rental car 10min

10:10am

Kiyosato Shochu Distillery (time TBA)



In the autumn, you can take a tour of a brewery producing Kiyosato's specialty, potato shochu wine (reservations are required).

↓ Rental car 20min

11:30am

Papas Land Sattsuru Roadside Station

↓ Rental car 10min

12:30pm

A02 Ura-Mashu Downhill Cycling Tour 270min

↓ Rental car 60min

6:00pm

Accommodation in the Utoro Onsen area

Day5

9:00am

Accommodation in the Utoro Onsen area

↓ Rental car 30min

9:30am

Walk around the Shiretoko Goko Lakes

↓ Rental car 60min

1:30pm

Tofutsu-ko Waterfowl and Wetland Center

↓ Rental car 30min

3:00pm

Hokkaido Museum of Northern Peoples

↓ Rental car 40min

7:25pm

Memanbetsu Airport

Depart for Haneda Airport

During the tour, you can see the Oshinkoshin Waterfall!

Don't forget to buy local souvenirs in town before you go home!